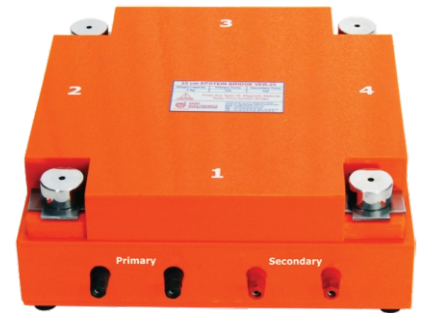


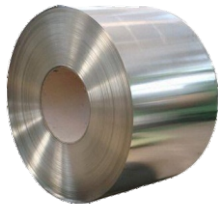


Digital Epstein Tester VET-1608A

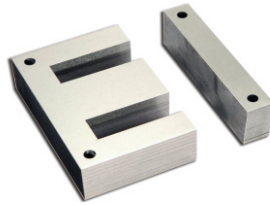


Epstein Bridge VEB-25

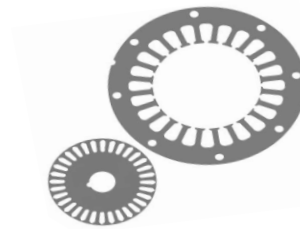
Application



Electrical Steel



Transformer Lamination



Motor & Pump Stampings



Testing Strips

DIGITAL EPSTEIN TESTER VET-1608A

(IEC 60404-2, ASTM 343 & IS 649 Compliance)

KEY FEATURES

- Better accuracy than required by standards
- Accurate sine wave with Negative feedback
- 20 x 4 Line Jumbo LCD Display
- USB and RS-232 Port for computer interfacing
- Software with Database & different test report formats
- Tamper proof calibration
- Automatic over mains voltage shut down
- Automatic over current shut down for Amplifier
- Fuse Protection for Over mains current condition
- Stable Source 16V-8A (500g), 32V-15A (1 Kg)
- B-H Curve Measurement in Software
- Table Top Model & Small in size

APPLICATION

- To measure Quality of Electrical steel CRGO, CRNO, CRNGO, CRCA etc.
- Useful for Electrical Steel, Transformer Laminations & Motor Stamping Manufacturer, Supplier & Users.
- Useful for Transformer, Motor, Generator, Pump Manufacturer.
- Useful for Research & Educational Institutes in Electrical & Metallurgical Department.
- Useful for Calibration & Testing Laboratories.

INTRODUCTION

VEER make Digital Epstein Tester VET-1608A is complete stand alone Instrument to measure AC magnetic properties of Electrical Steel of all grade and gauges mostly. It refers **IEC 60404-2, ASTM 343 & IS 649** Standard. Epstein Frame testing method is standard & worldwide accepted method to test important magnetic parameters like Watt/kg, VA/kg, Magnetizing Force, Permeability, Form Factor etc on different Induction (Flux Density). We provide Software to Generate Test Report and Graphs. Hysteresis Curve (B/H) facility also available in software .

SPECIFICATIONS OF EPSTEIN TESTER VET-1608A

Parameters	VET-1608A (500g)	VET-1608A (1000g)
Sine Wave Generator	30 Hz to 70 Hz (Up to 450 Hz on Request)	
Source Current Capacity	11 Amp Peak or 8 Amp RMS	21 Amp Peak or 15 Amp RMS
Source Voltage Capacity	16 Volt RMS	32 Volt RMS
Peak Magnetizing Force	8000 AT/m	15000 AT/m
Distortion of Sine Wave	Less than 1% at no load	
Auto Protection of Source	Auto shut off for more than 11 Amp Peak	Auto shut off for more than 21 Amp Peak
Protection of Mains Power	Fuse and Auto Over Voltage cut off	
Power Supply Voltage	230V \pm 10% @ 50Hz (110V \pm 10% @ 60Hz on request)	
Operating Temperature & Humidity	10°C to 50°C Temperature & Less than 75% Humidity (Non Condensation)	
Dimension in mm (W x D x H)	485 mm x 484 mm x 195 mm approx.	485 mm x 610 mm x 195 mm approx.
Weight of Unit in kg	15 kg approx.	30 kg approx.
Power consumption	85 VA approx. (for 500 gram at No Load)	

SPECIFICATIONS OF EPSTEIN BRIDGE VEB-25

Parameters	VET-1608A (500g)	VET-1608A (1000g)
Bridge Size	25 cm (94 cm mean length)	
Number of Turns	Primary = Secondary = 700 turns	
Specimen Size	30 mm x 280 mm to 305 mm	
Specimen Weight Capacity	500g	1000g
Dimension in mm (W x D x H)	320 mm x 345 mm x 115 mm approx.	320 mm x 345 mm x 120 mm approx.
Bridge Weight	6.7 kg Approx.	7.3 kg Approx.
Air Flux compensating coil	Mounted inside the Bridge.	

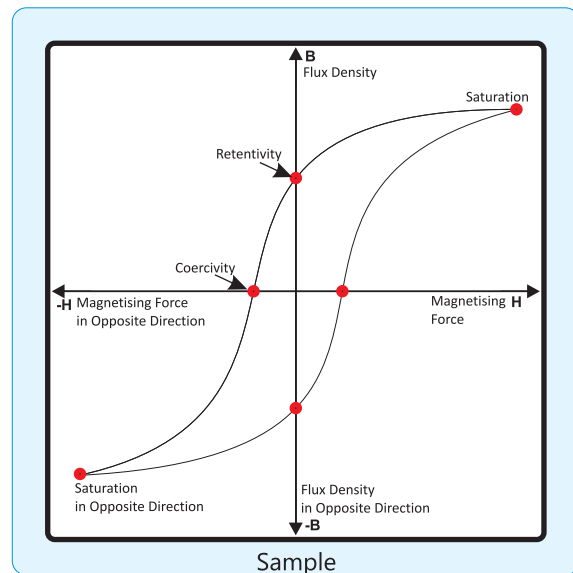
ACCURACY OF VET-1608A

Parameter	VET-1608A FSD \pm %	Accuracy Required IEC 60404-2 \pm %
RMS Voltmeter	\pm 0.10%	\pm 0.2%
RMS Ammeter	\pm 0.10%	\pm 0.2%
Watt Meter	\pm 0.10%	\pm 0.5%
Flux Voltmeter	\pm 0.20%	\pm 0.2%
Peak Ammeter	\pm 0.20%	\pm 0.5%
Frequency	\pm 0.05%	\pm 0.1%

STANDARD ACCESSORIES

Sr. No.	Accessories	Qty.
1.	25 cm Epstein Bridge	1
2.	Connection Wire for Bridge	4
3.	Standard Corner Weight	4
4.	AC Mains Power Supply Wire	1
5.	RS-232 serial interface wire	1
6.	USB interface wire	1
7.	Calibration Certificate (Our Lab)	1 Each
8.	Operation Manual, Software CD	1
9.	Test Sample Strips with Report (Our Lab)	1 Set

HYSTERESIS CURVE (B-H)



- Note:**
1. Accuracy is specified on 50Hz / 60Hz at Unity PF.
 2. Specifications are subject to change without prior intimation.
 3. Please Confirm Specifications at the time of Purchase Order.



VEER ELECTRONICS PRIVATE LIMITED

Plot No. B-45, GIDC Electronics Estate, Sector-25,
Gandhinagar - 382024, Gujarat, India.

Phone : +91 - 79 - 23 28 92 25 Fax : +91 - 79 - 23 28 92 26

Mobile : +91 - 98 79 20 34 86 / 80 38

Email : info@veerelectronics.com, sales@veerelectronics.com

Web : www.veerelectronics.com, www.veerpoweranalyzer.com



Scan to Reach us



Authorized Dealer / Distributor

